



OPENSTREET MAPPING ACTIVITIES IN MONGOLIA



OpenStreetMap is the free, wiki-world map

OpenStreetMap

OpenStreetMap нь дэлхийн газрын зургийг бүхэлд нь нийтэд хүртээмжтэй, үнэгүй, хэн ч татаж авч болохуйц болгох зорилготой цахим төсөл. 2004 онд Английн оюутнуудын санаачилгаар эхэлсэн.



=



+



Сайн дураараа ажиллаж буй мянга мянган хүмүүсийн хамтын хөдөлмөрөөр бий болдог. Хэн бүхэн нэгдэхэд нээлттэй.

SMART CITIES: MAPPING ULAANBAATAR

HOT Program · [Mongolia](#) · COMPLETED





Public Lab
Mongolia

Our mission:

Cultivating a healthy environment
and resilient communities through open
data.



Mapathon program

Build network of local mappers

Promote OSM and use of geodata

Support data-based decision-making

Community Mappers Program ~2021~

- Participants from 21 provinces
- Mapping for essential services



Youth Mappers Internship Program ~2020~

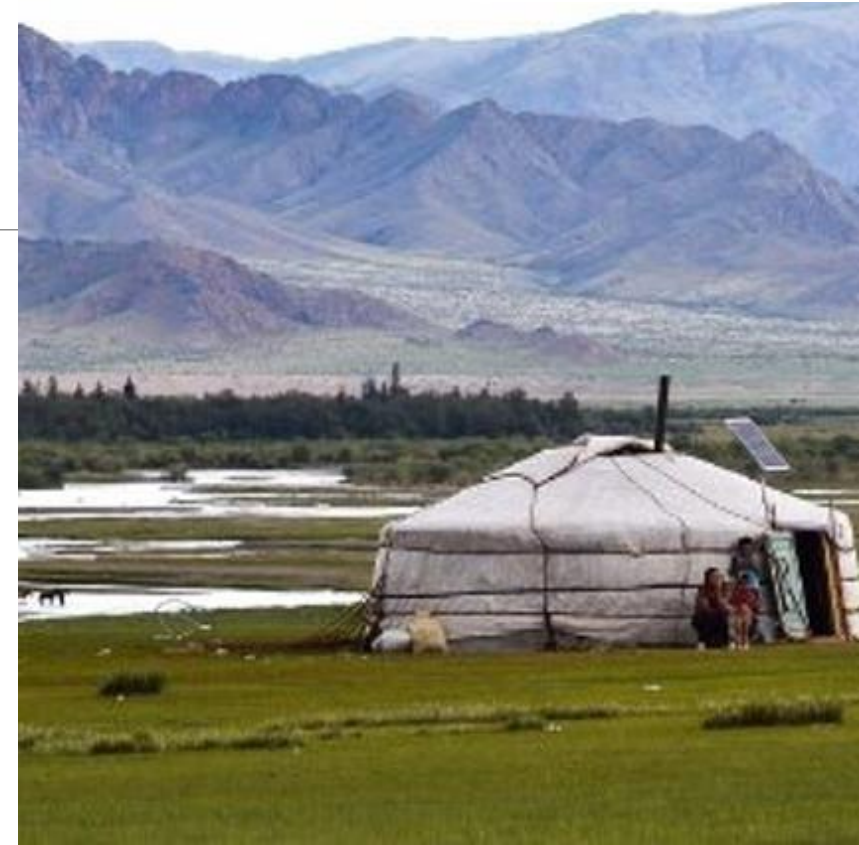
- 2020-Data Entry
1 university, 25 students, 17 provinces
- 2021-Data Entry
3 university, 30 students, Ulaanbaatar city
- 2022-Data Entry and Analysis
5 university, 30 students, Ulaanbaatar and Erdener city

Mapathon series ~2019~

Local Universities

- National University of Mongolia
- Mongolian University of Life Science
- Mongolian National University of Education
- Mongolian University of Science and Technology
- Mongolian National University of Medical Sciences





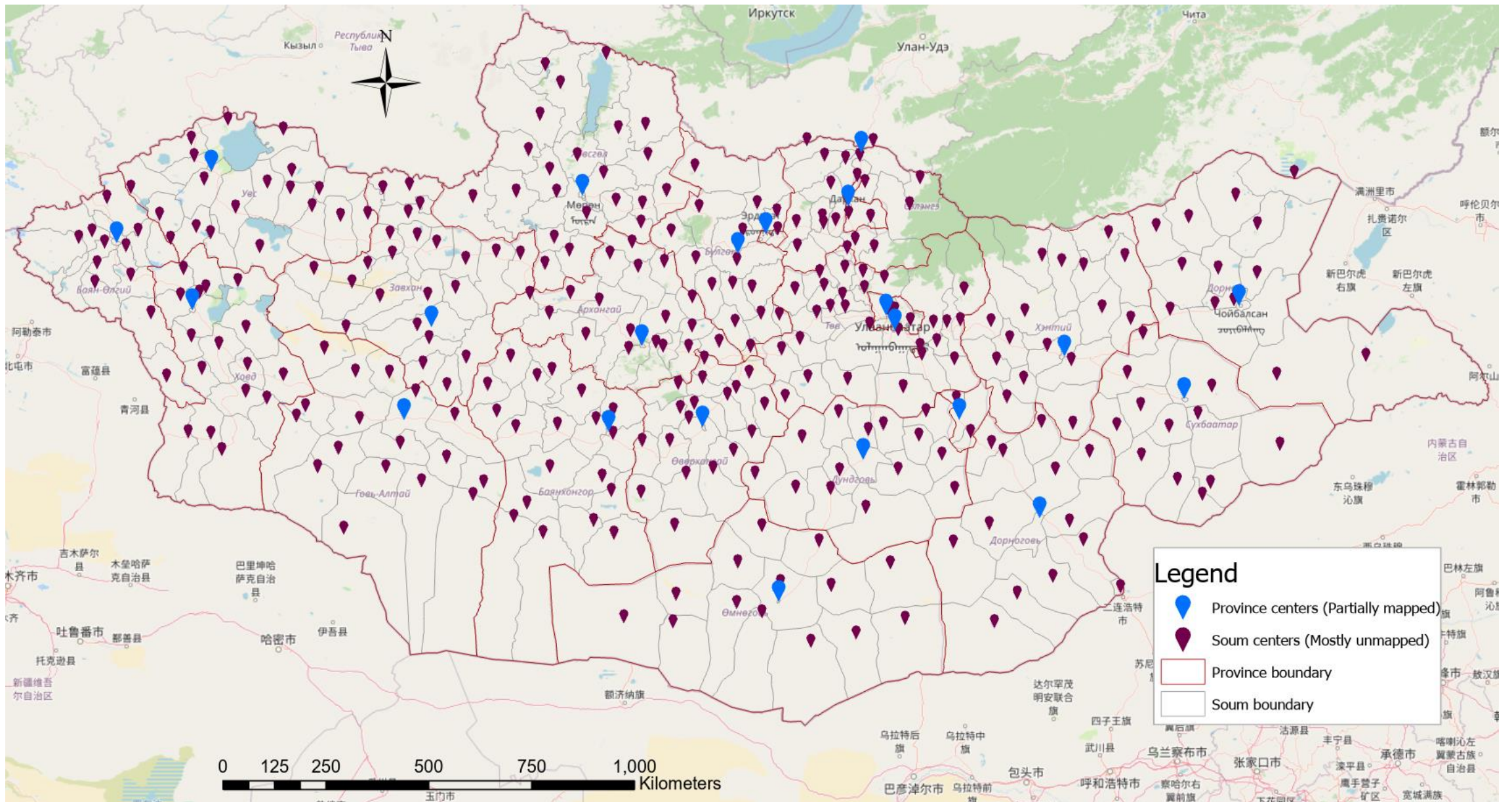
Mongolia briefly on OSM

Settlements

Urban – partially mapped, need update

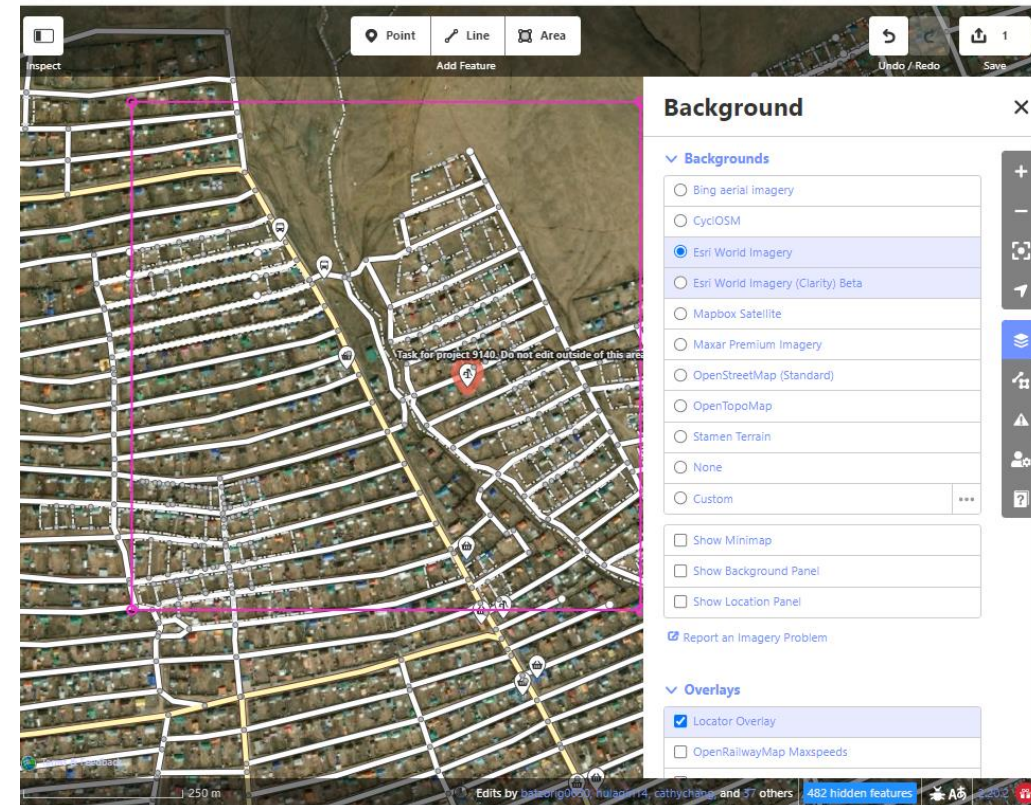
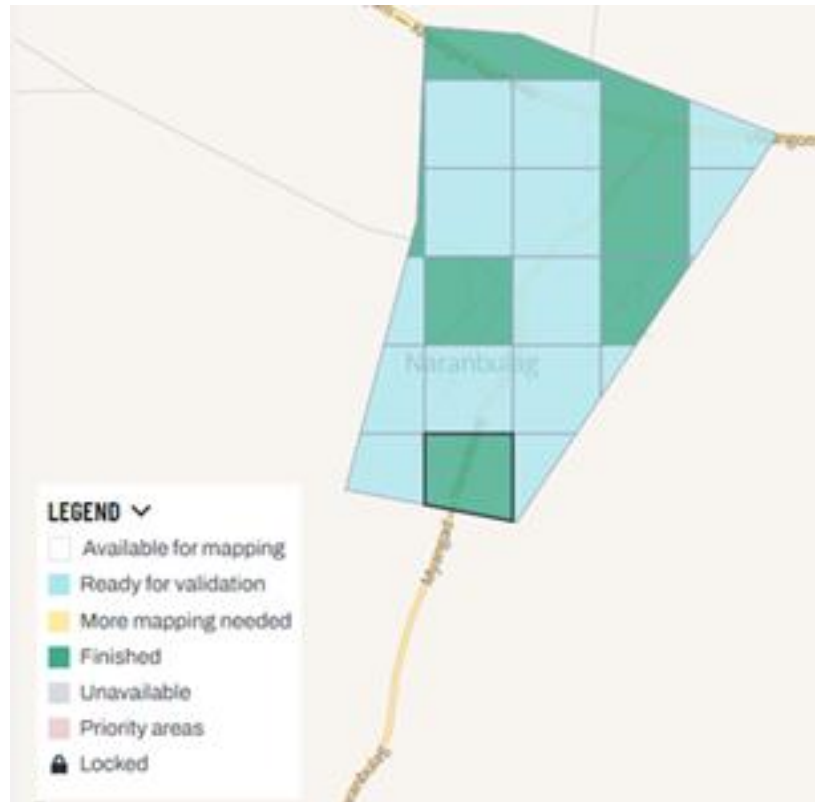
Semi urban – partially mapped

Rural – mostly unmapped

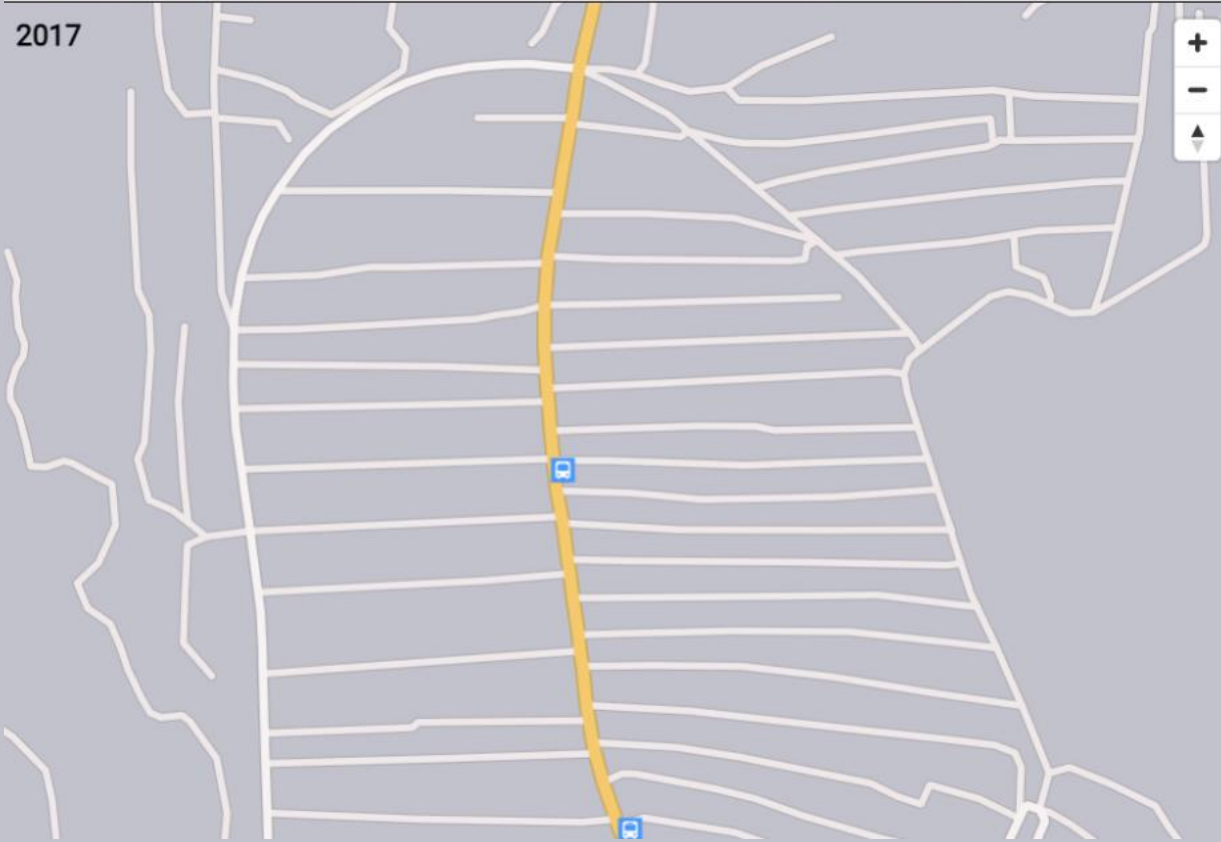


Tools: Tasking manager

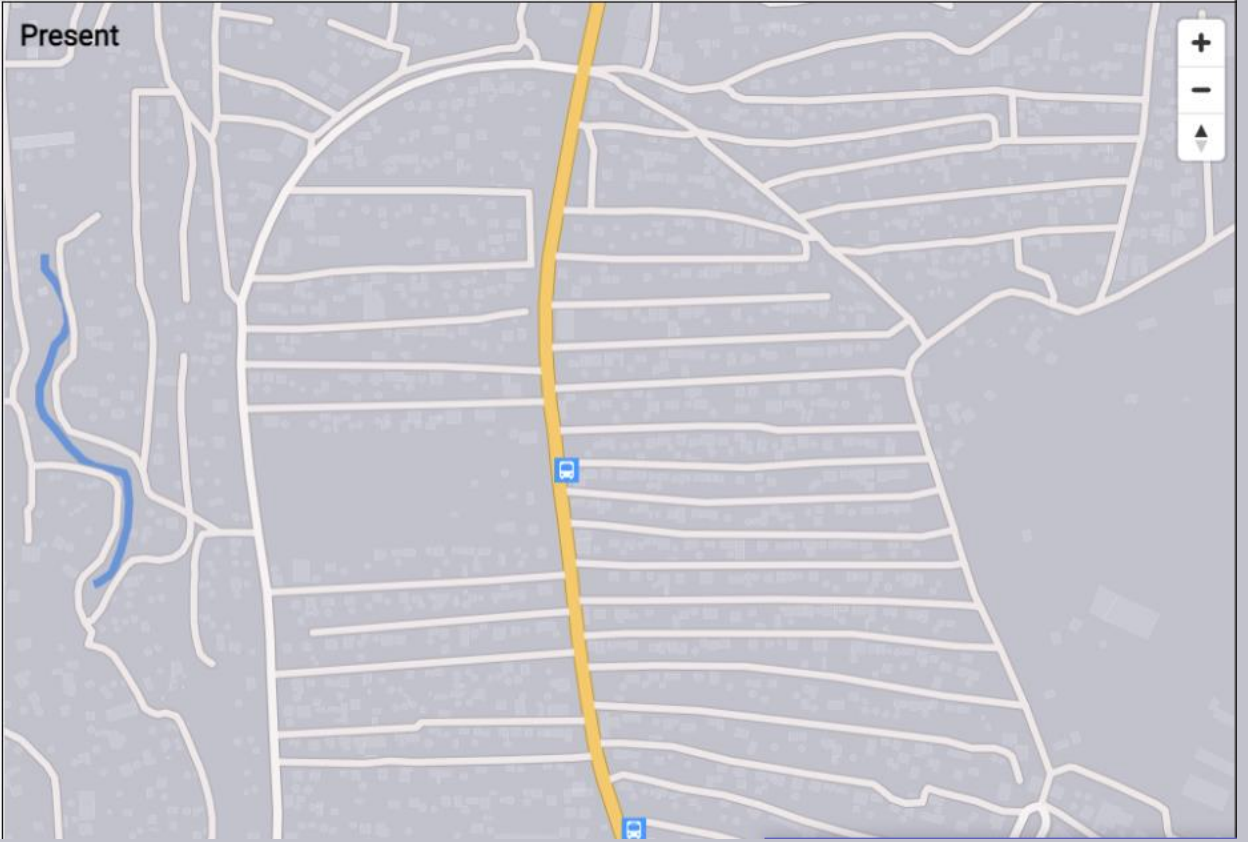
Tasking Manager is a platform where individuals can team up for mapping in OpenStreetMap



2017



Present



Current OSM mapping projects



Buildings

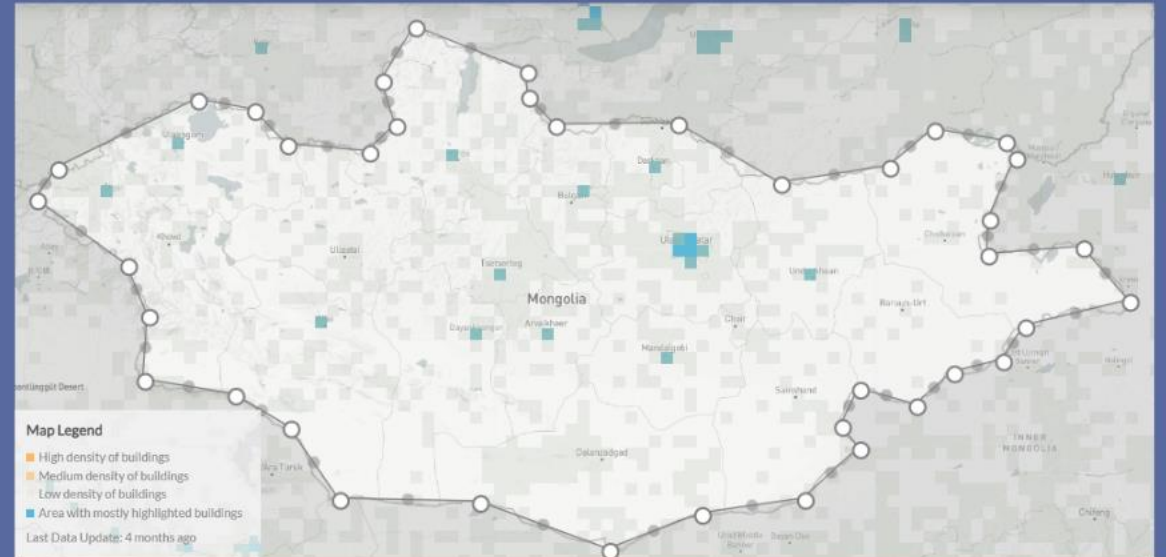
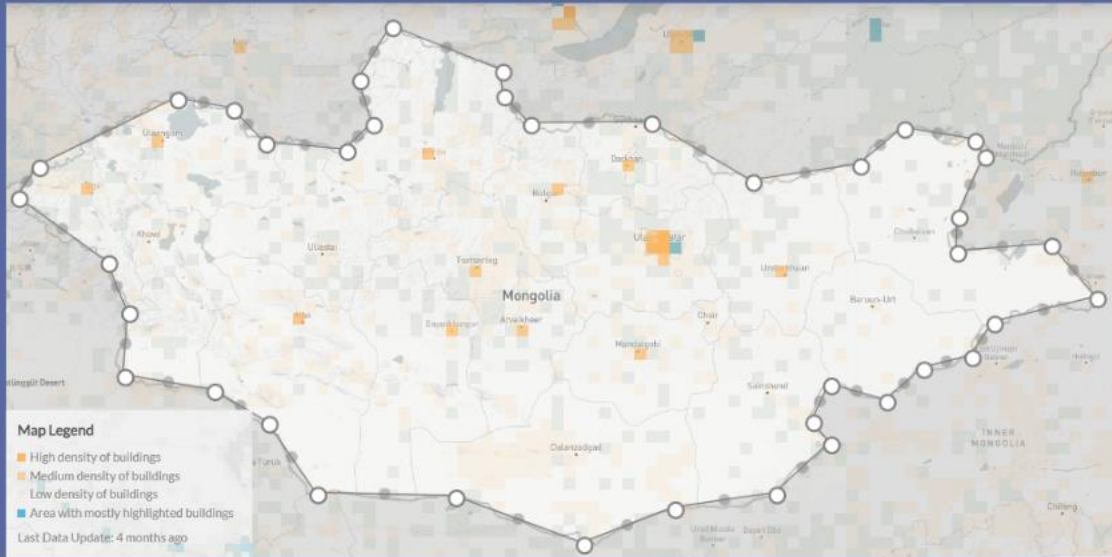
87163



526631

2018

2022



526,631 Buildings
74 HOT Projects
512+ Contributors
40+ Distinct Tags

Compare Time Periods

Close

South Korea

2008 2010 2012 2014 2016 2018 2020 2022

Road

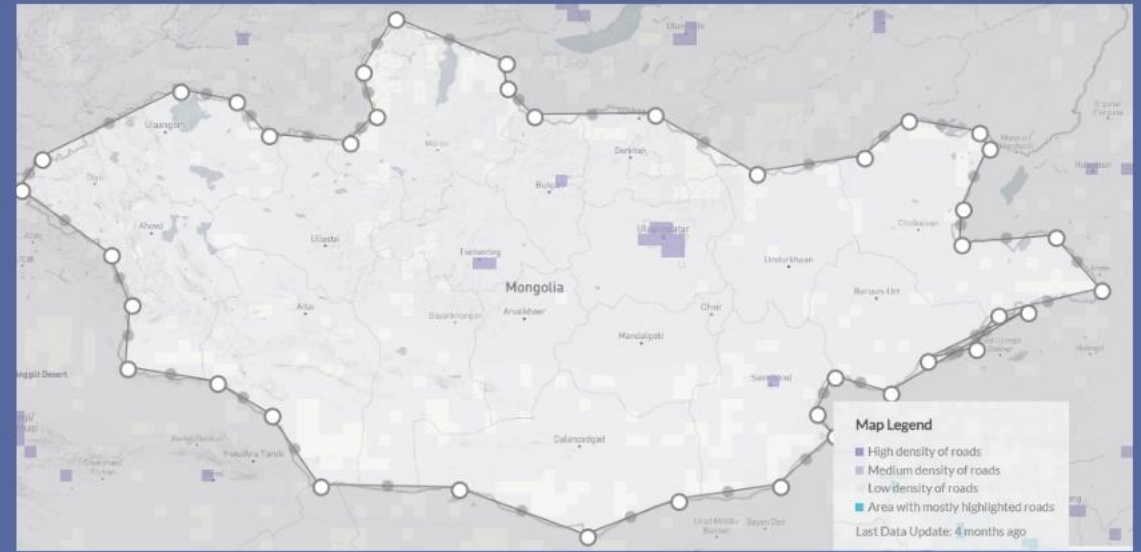
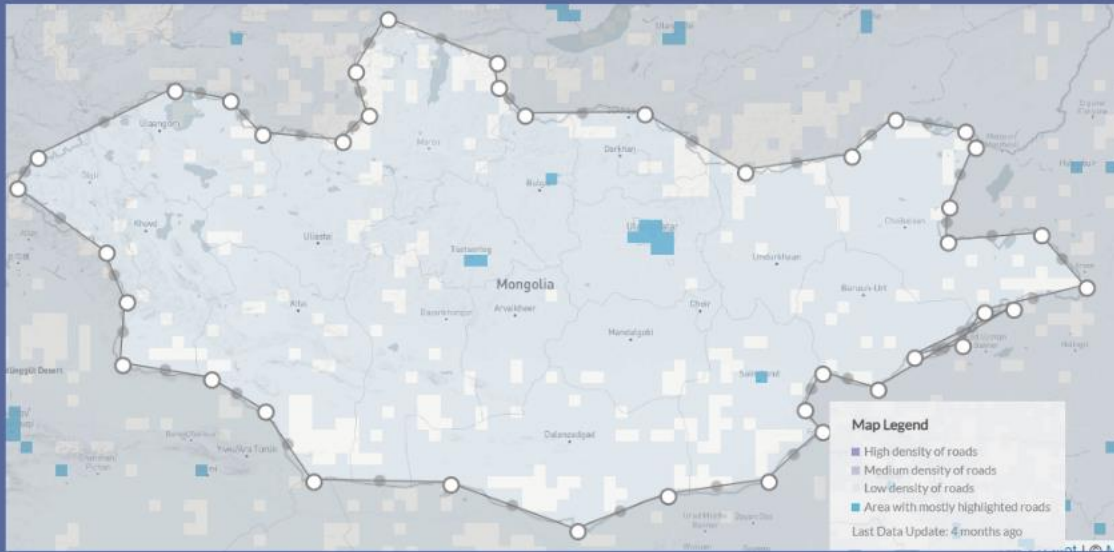
18058



150651

2018

2022



150,651 km of Roads
74 HOT Projects
636+ Contributors
27+ Distinct Tags

Compare Time Periods

Close

2008 2010 2012 2014 2016 2018 2020 2022

Amenities

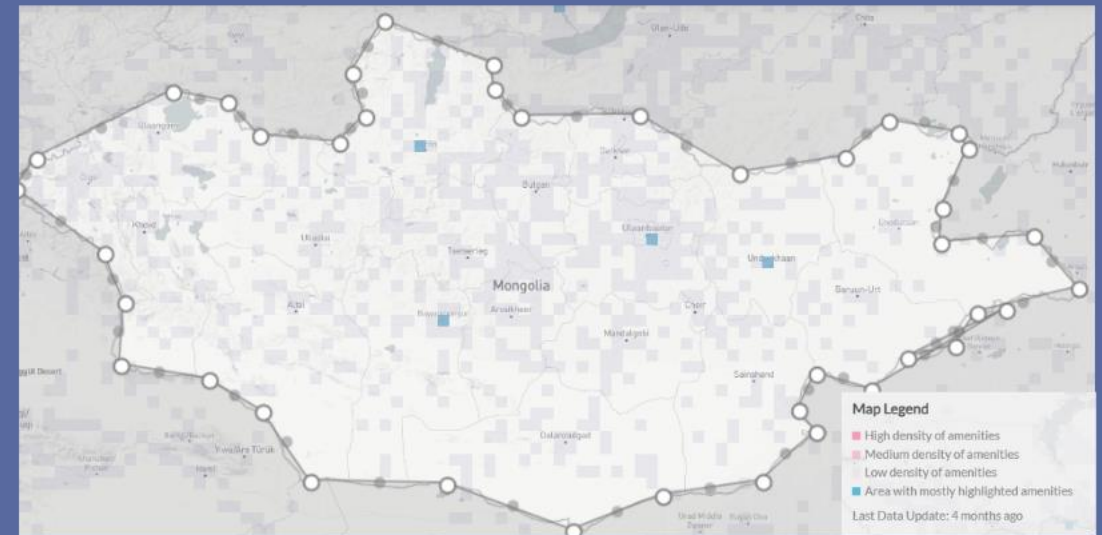
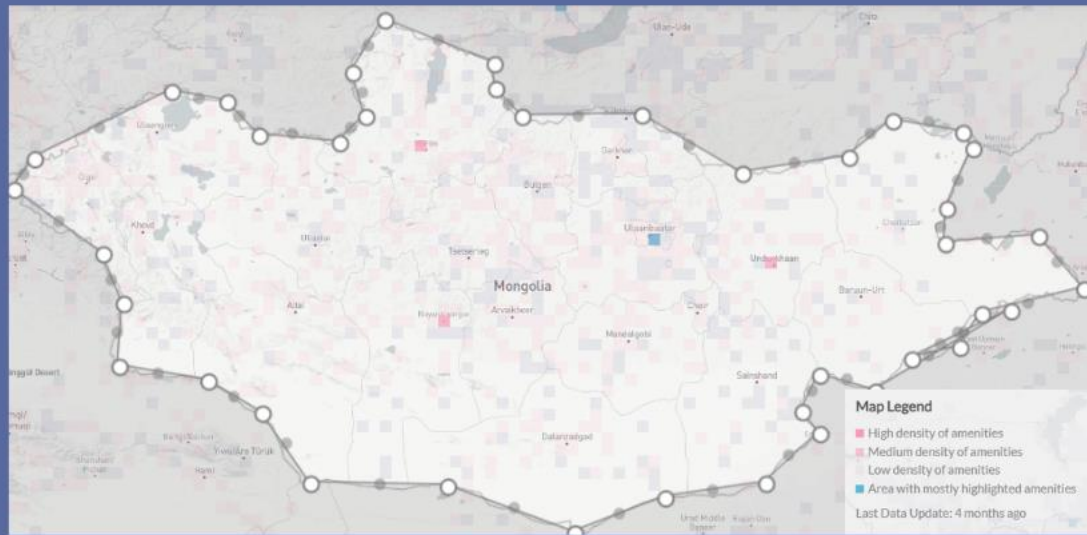
5017



17596

2018

2022



17,596 Amenities 74 HOT Projects 476+ Contributors 77+ Distinct Tags

Compare Time Periods Close

2008

2010

2012

2014

2016

2018

2020

2022

Search by region or HOT Project ID



or

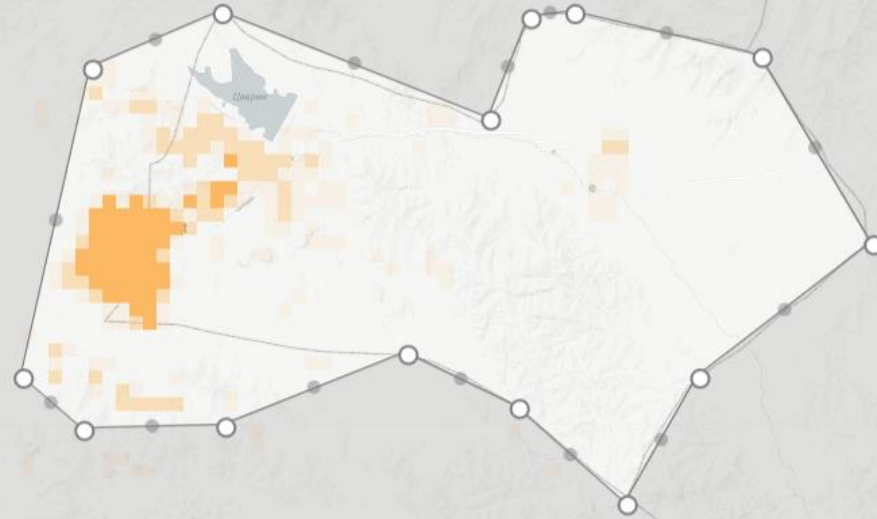
Outline Custom Area

Buildings ▾

Map Legend

- High density of buildings
- Medium density of buildings
- Low density of buildings

Last Data Update: a day ago



10 km
5 mi

Leaflet | © Mapbox © OpenStreetMap contributors

Recency of Edits ▾

20,820
Buildings

4
HOT Projects

147+
Contributors

27+
Distinct Tags

Compare Time Periods

Close



Search by region or HOT Project ID



or

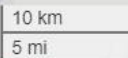
Outline Custom Area

Roads ▾

Map Legend

- High density of roads
- Medium density of roads
- Low density of roads

Last Data Update: a day ago



Leaflet | © Mapbox © OpenStreetMap contributors

Recency of Edits ▾

1,131

km of Roads ▾

4

HOT Projects

117+

Contributors

17+

Distinct Tags

Compare Time Periods

Close



Search by region or HOT Project ID



or

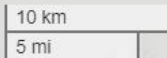
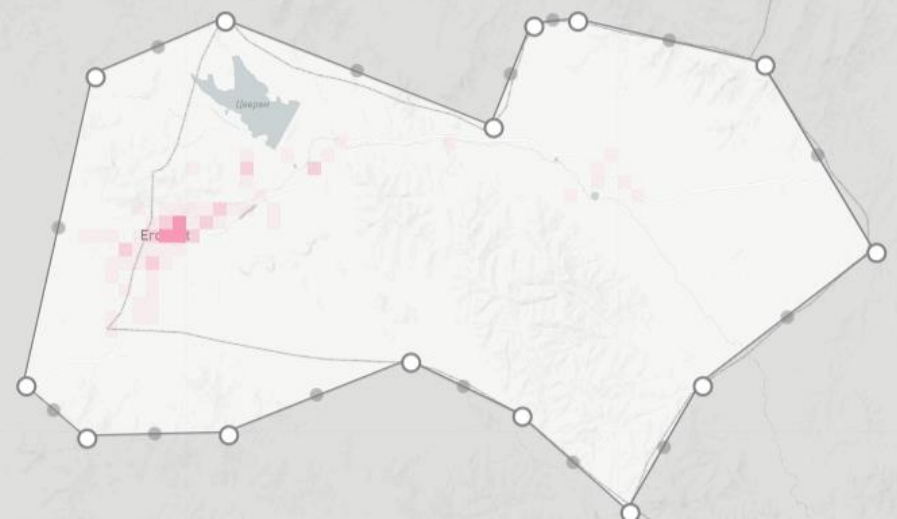
Outline Custom Area

Amenities ▾

Map Legend

- High density of amenities
- Medium density of amenities
- Low density of amenities

Last Data Update: a day ago



Leaflet | © Mapbox © OpenStreetMap contributors

Recency of Edits ▾

405	4	30+	32+
Amenities	HOT Projects	Contributors	Distinct Tags

Compare Time Periods Close



Tags

building=yes	88%	highway=track	36%	amenity=fuel	21%
building=ger	5%	highway=residential	22%	amenity=restaurant	11%
building=house	2%	highway=unclassified	17%	amenity=parking	10%
building=hut	2%	highway=tertiary	12%	amenity=place_of_worship	7%
building=train_station	1%	highway=road	4%	amenity=bank	5%
building=commercial	<1%	highway=trunk	4%	amenity=school	4%
building=apartments	<1%	highway=path	2%	amenity=cafe	4%
building=greenhouse	<1%	highway=service	2%	amenity=fast_food	4%
building=tent	<1%	highway=footway	<1%	amenity=atm	3%
building=cabin	<1%	highway=secondary	<1%	amenity=toilets	3%

Challenges

Continuous update – updating outdated information

Need for more advanced mappers – more experience, less errors

To validate current projects

To ensure regular participation of the local community of mappers

Opportunities



Crowdsourcing data



Intersectoral stakeholders
collaboration



Themed data – GIS-based
technology services

Opportunities



Crowdsourcing data



Intersectoral stakeholders
collaboration



Themed data – GIS-based
technology services

Youth Mappers

YOUTH MAPPERS ERDENET ХӨТӨЛБӨР

- 20 оролцогч
- 4 баг
- 14 хоног

Суурь зураглал
POI/Хүснэгтэн мэдээлэл

Mapping our world together hotosm.org

Tasking Manager EXPLORE PROJECTS MY CONTRIBUTIONS MANAGE LEARN ABOUT SUPPORT

Erdenetsogt Sumiyasuren













Overview Projects Organizations Teams Statistics

MANAGE PROJECTS + NEW


orkhon Campaign Organization Sort by Clear filters Show map

Active Draft Archived Created by me **Managed by me**

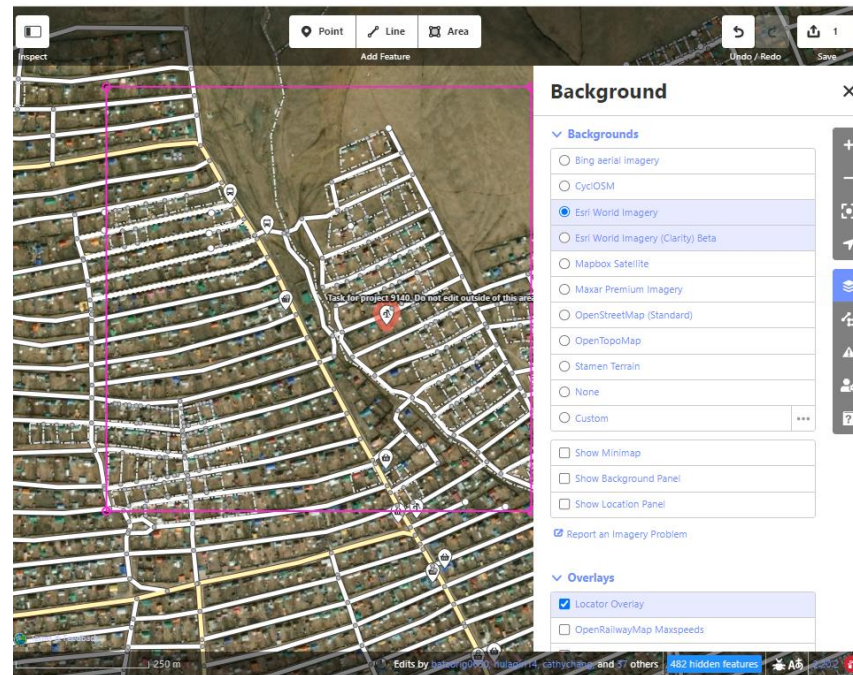
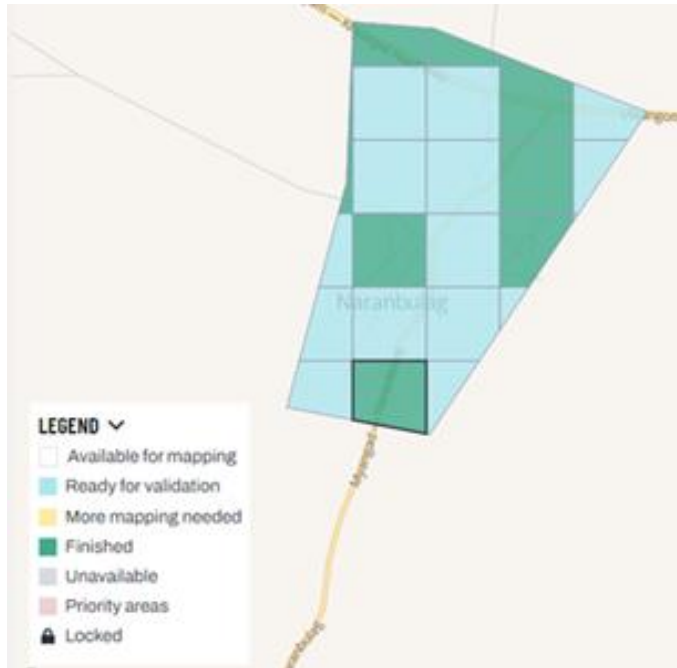
showing 4 of 4 projects

	#12357 OrkhonMapathon2022	100%	3%	57	Low		
	#12496 OrkhonMapathon2022_PL...	100%	0%	43	Low		
	#12497 OrkhonMapathon2022_PL...	100%	6%	23	Low		
	#12498 OrkhonMapathon2022_PL...	100%	0%	24	Low		

1

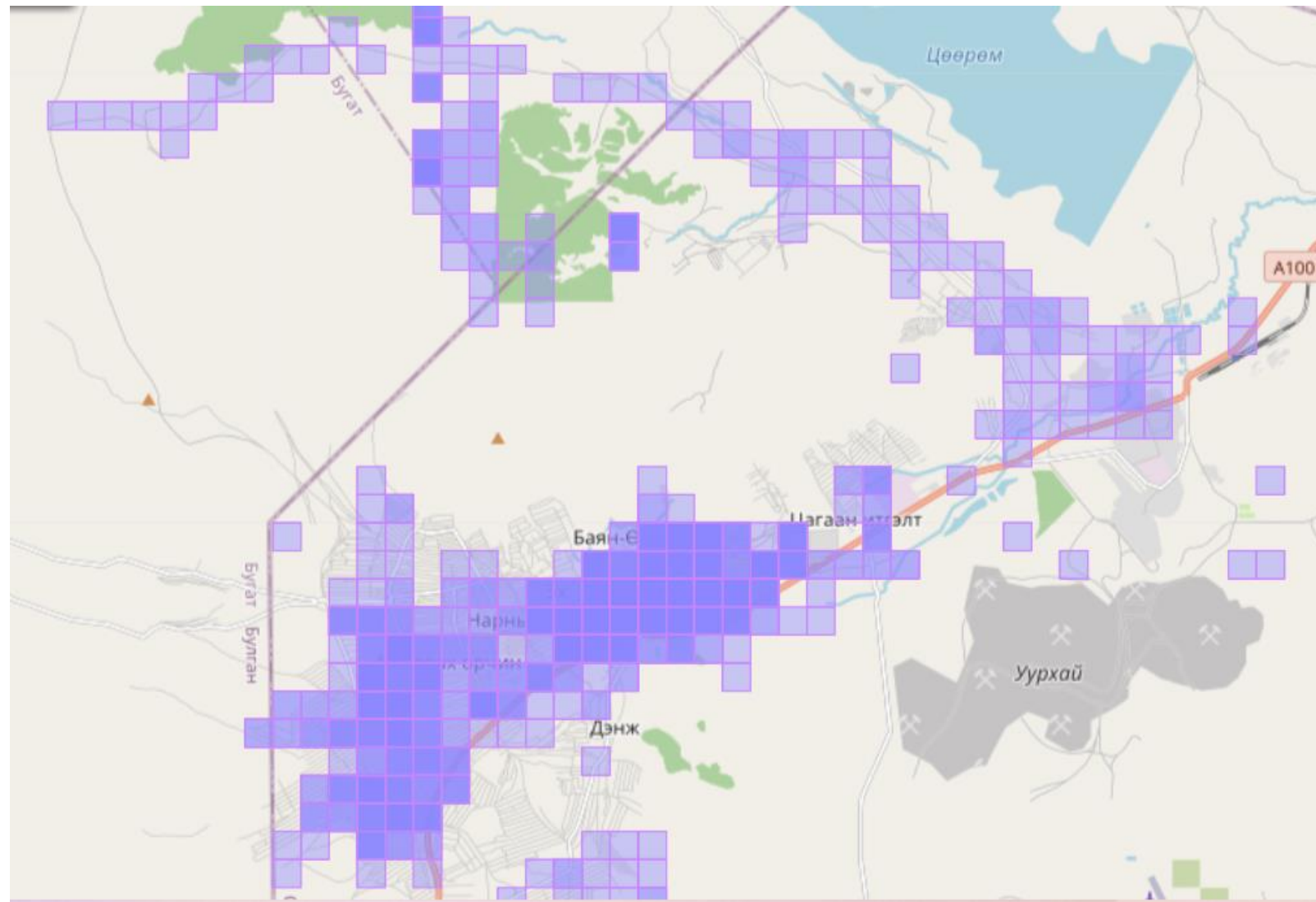


Tasking manager+Mapillary



Mapillary

building	2703
highway	1736
barrier	1284
name	1277
building:	445
amenity	222
name:	171
shop	165
surface	159
landuse	64
natural	41
leisure	38
place	19
tourism	19
sport	16
ref	12
route	12
historic	1



Share this on

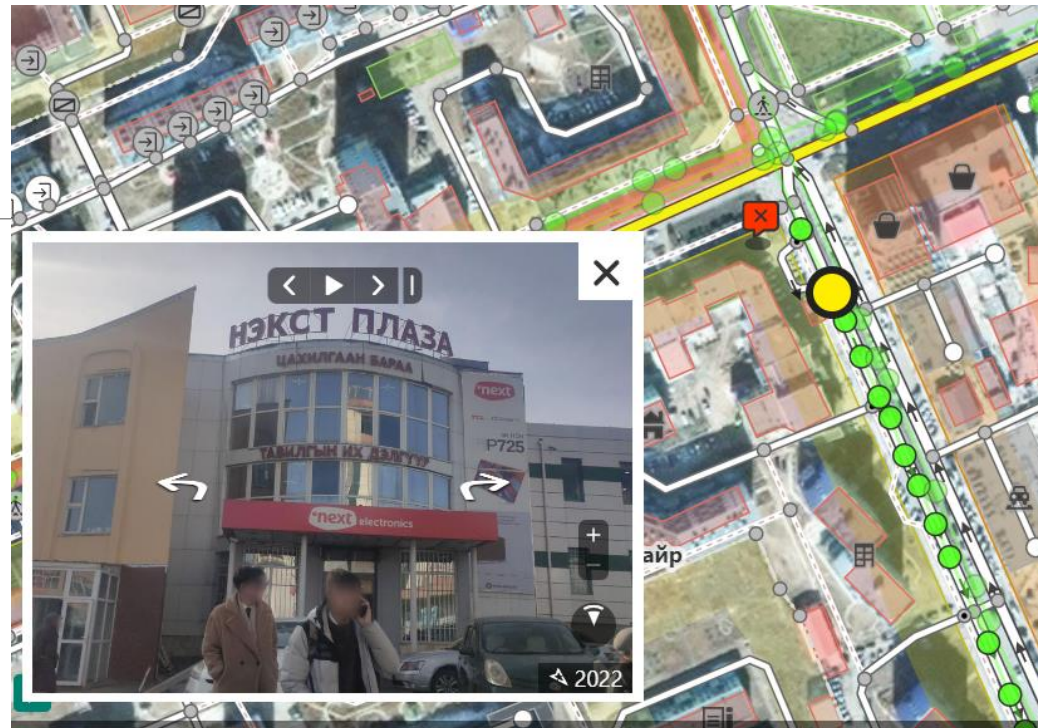


BEFORE AFTER MAP

Orkhon Mapathon

Choose map style:





Mapillary хэрхэн ажилладаг вэ?

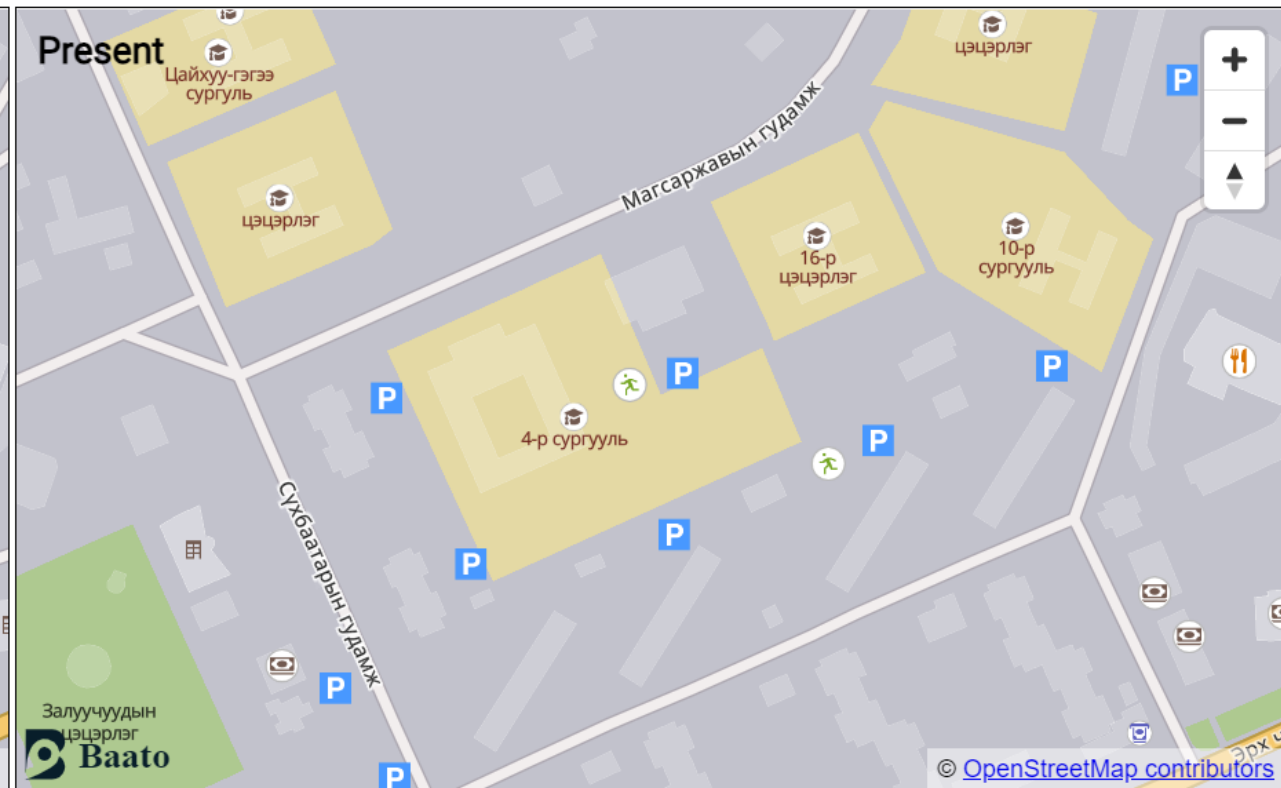
Share this on



BEFORE AFTER MAP

Orkhon Mapathon

Choose map style:





PUBLIC LAB MONGOLIA
Cultivating a healthy environment and resilient communities through open data



МАР АВИЛТҮ

Хүн бүрт хүртээмжтэй орчныг бий болгоё!

БАЯНЗҮРХ ДҮҮРГИЙН ЭМИЙН САНГИЙН ХӨГЖЛИЙН БЭРХШЭЭЛТЭЙ ИРГЭД ҮЙЛЧЛҮҮЛЭХ БОЛОМЖ

- Налуу шаттай эмийн сан
- Налуу шаттай боловч шаардлага хангаагүй эмийн сан
- Налуу шатгүй эмийн сан
- Суурьшлын бус
- Хотын төв
- Дүүргийн хил

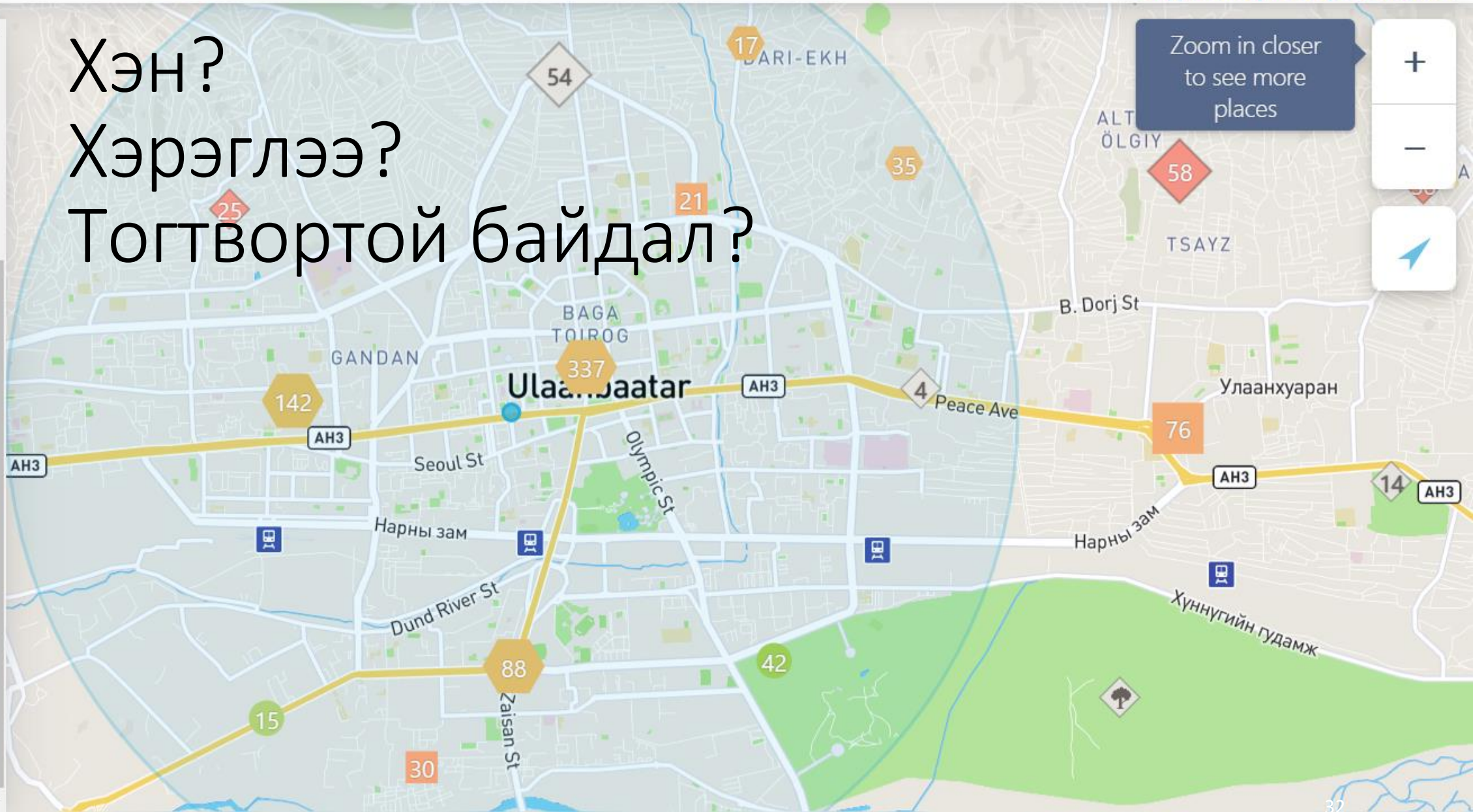
13% тэргэнцэртэй иргэн зориулсан налуу шаттай
260 Эмийн сан

visible places.

Бүртгэлгүй газрыг нэмэх

Хэн?
Хэрэглээ?
Тогтвортой байдал?

- WC
- Toilets
- ble
- cessible WC
- isible
- ccessible
- cessible



Zoom in closer to see more places

Map navigation controls: zoom in (+), zoom out (-), and a compass icon.



English

Help

Create tactile maps easily for any address



Lynnwood Library - Sno-Isle Libraries

📍 19200 44th Avenue West Lynnwood Washington 98036 📞 (425) 778-2148 🌐 <http://www.sno-isle.org/locations/lynnwood/>

★★★★★ 2 Reviews

Write a Review

Claim This Business



- ✓ Wheelchair Accessible
- ✓ Well Lit Environment
- ✓ Accepts Relay Calls
- ✓ Experience Hiring Interpreter
- ✓ Positive Attitude
- ✓ Makes Eye Contact
- ✓ Assisted Listening Devices
- ✓ Speaks Clearly
- ✓ Pen and Paper Available
- ✓ Knows Sign Language
- ✓ Experience Hiring Interpreter

